



# MOORIE TOWNHOUSE ESTATES

Built in 1885, the Moorie Townhouse, located at 104 Edmund Street, was the residence of Lucion S. Moore, a successful lumber dealer. The unique Gothic tower, detailed colonettes and dormer windows with Renaissance details are accentuated by the ornate cornice. Adding more detail to the great facade is the charming banded arch.

The Moorie Townhouse features

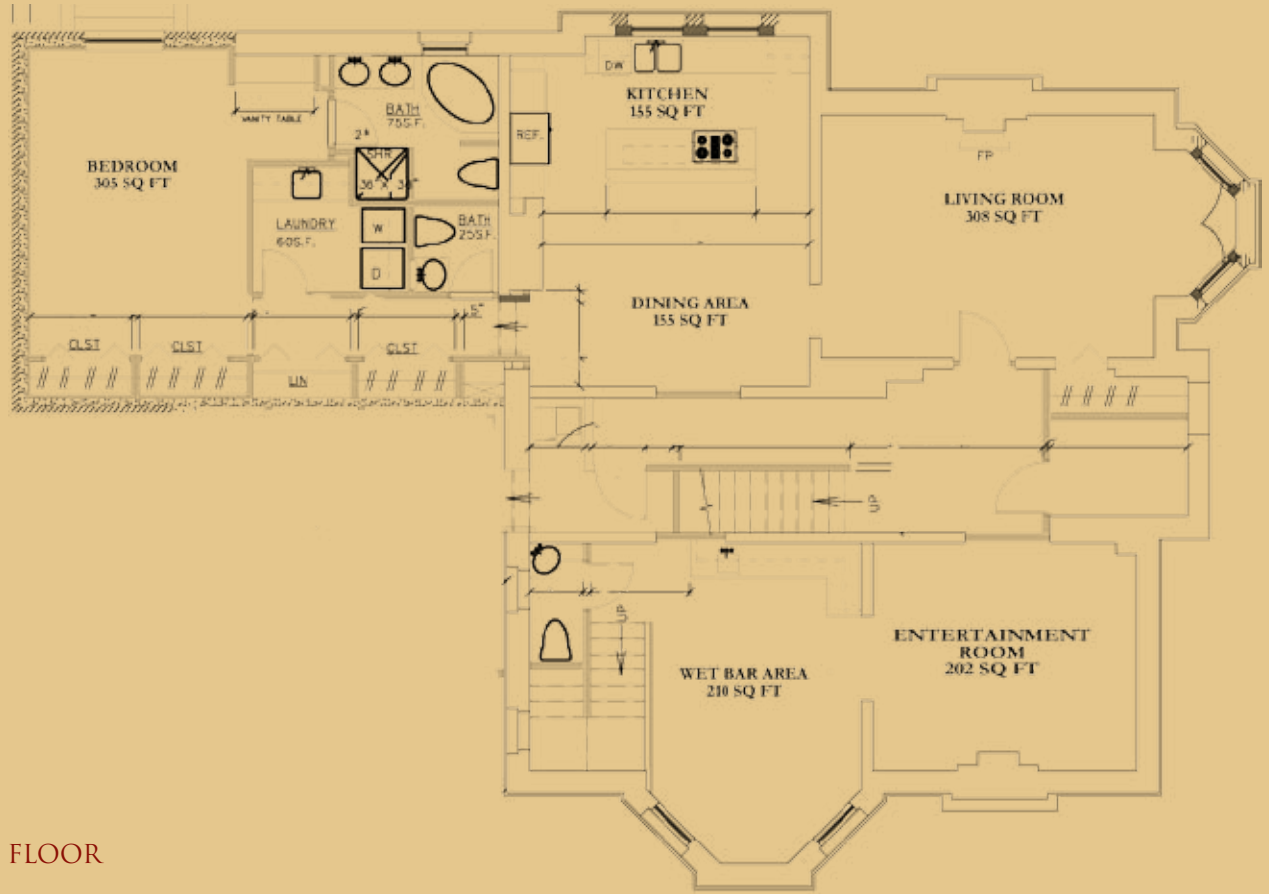
- three-story units with first floor walk-up entry
- one car garage
- spacious living and dining rooms
- modern kitchen with large pantry
- two bedrooms with two full baths plus half-bath
- extra large closets throughout
- high-speed technology
- cable and satellite dish-ready
- backyard patio and privacy fencing
- beautiful landscaping with new sidewalks



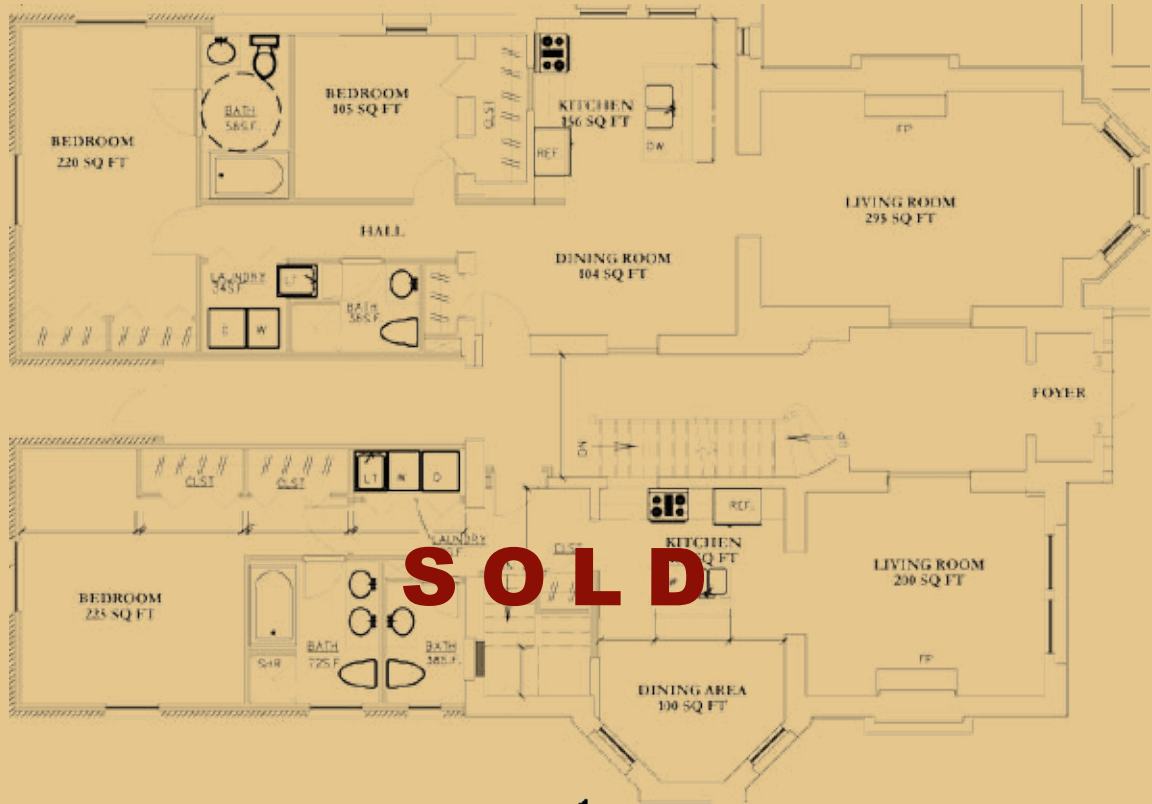
A tremendous collective effort was put forth by the architects, engineers and construction planners to maintain the old world charm of this stately mansion and add innovative technology. All of the materials, appliances, lighting and plumbing fixtures are energy efficient, environmentally-friendly and of the highest quality. Sound control materials separate each unit, with fire alarms and security systems incorporated into each townhouse. Moorie Townhouse units begin at approximately \$209,500.

For more information or to schedule a walk-through, call (866) 497-8600 or e-mail [info@platinumsalesllc.com](mailto:info@platinumsalesllc.com).

BASEMENT FLOOR

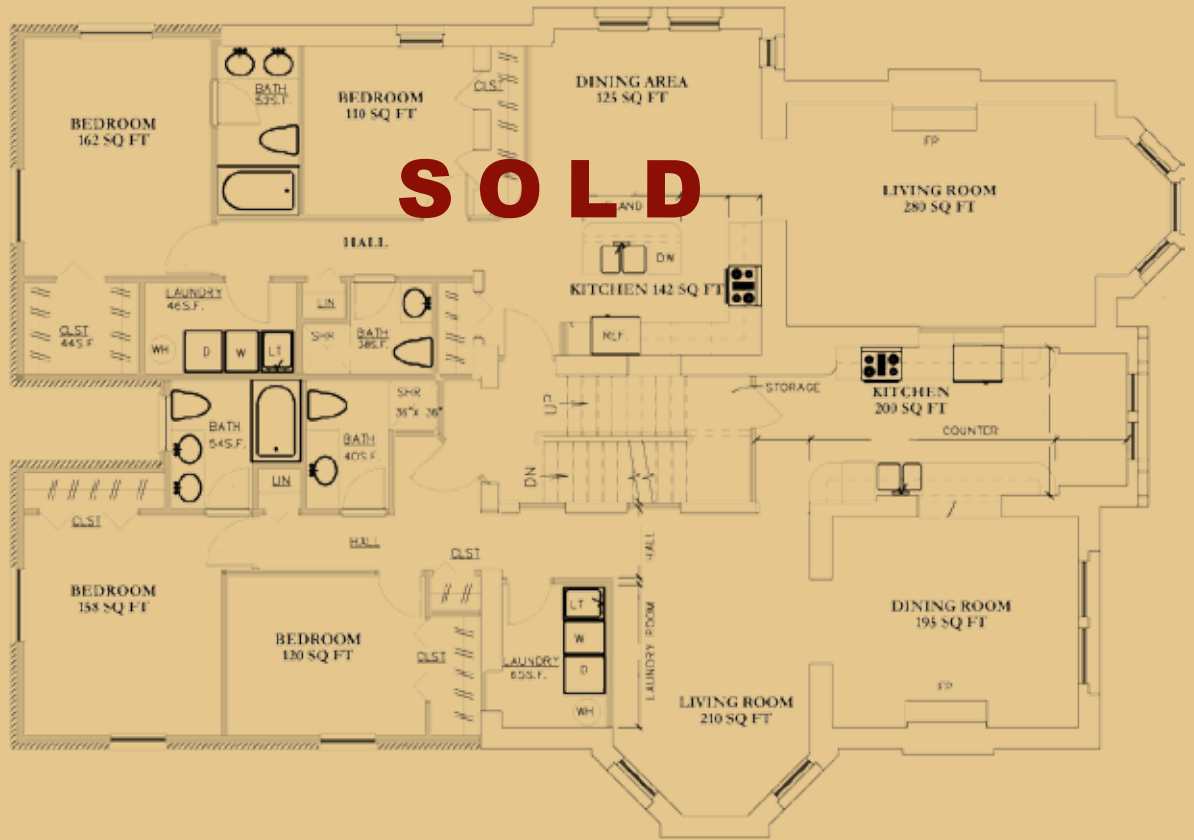


FIRST FLOOR

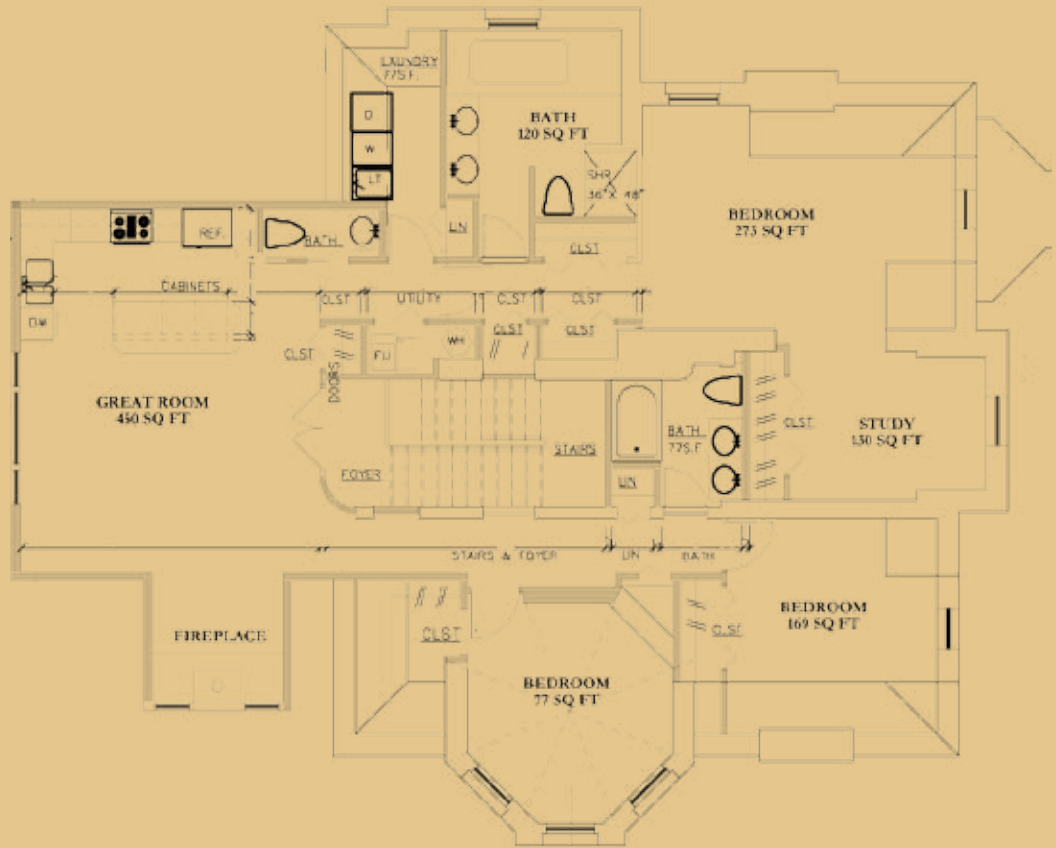


**PLATINUM**  
Building & Development, LLC

SECOND FLOOR



THIRD FLOOR



**PLATINUM**  
Building & Development, LLC